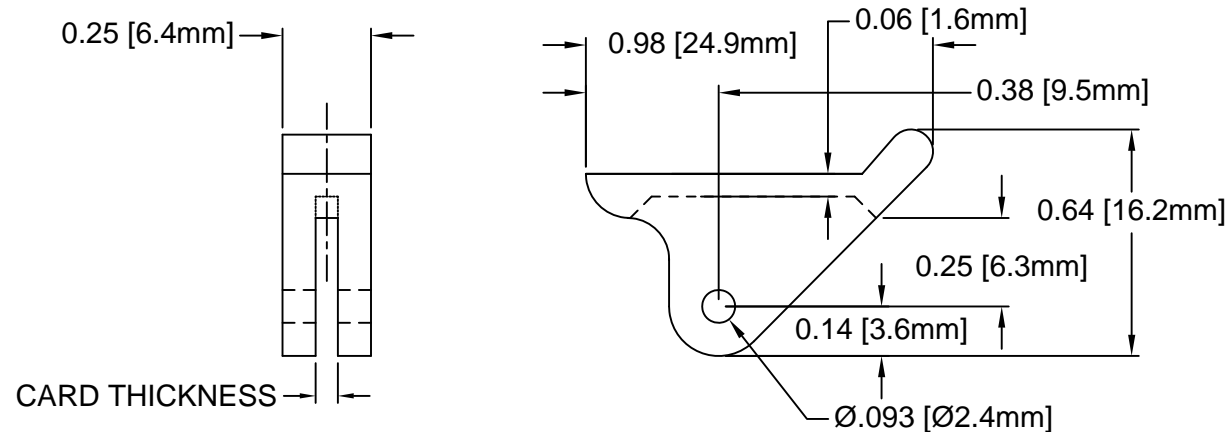
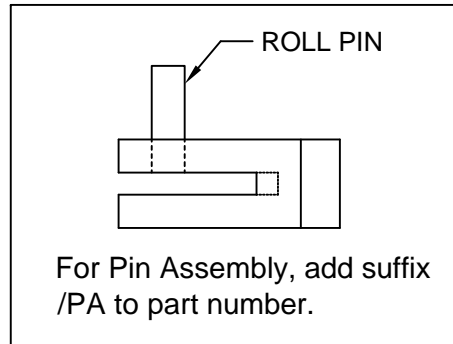
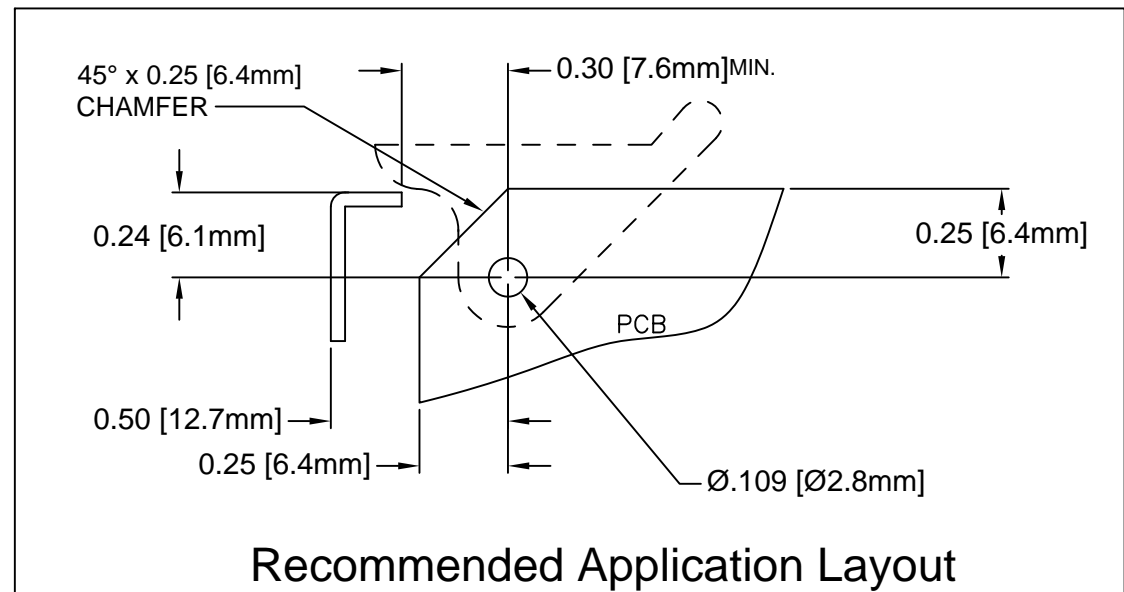


REV.	DESCRIPTION	DATE	APPROVED
C	Engineering Update w/o Changes	02/25/04	M. C.
D	Material Update w/o Changes	05/13/05	M. C.
E	Added Pin Assembly Notes	01/16/09	T. Y.
F	Added Notes 4, 5, 6 & Color Options Sheet #2	05/16/16	J. C.



PART NO.	COLOR	ROLL PIN	CARD THICK.
CP-86 NT	NATURAL	RP-250	1/16" (1.6mm)
CP-86 WE	WHITE	RP-250	
CP-86 XX	SEE S.#2	RP-250	
CP-89 NT	NATURAL	RP-250	3/32" (2.4mm)
CP-89 WE	WHITE	RP-250	
CP-89 XX	SEE S.#2	RP-250	



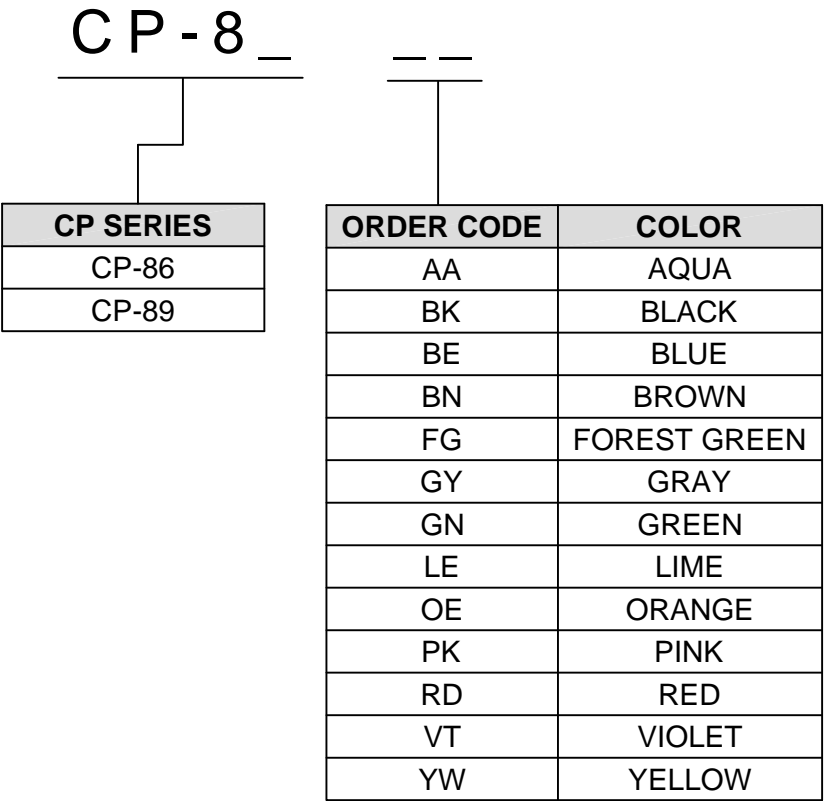
## Recommended Application Layout

5. PRE-ASSEMBLED ROLL PINS AVAILABLE UPON REQUEST.
4. ROLL PINS INCLUDED. PACKAGED SEPARATELY.
3. MATERIAL: NYLON 6/6, 94V-2, WHITE.
2. MATERIAL: NYLON 6/6, 94V-2, NATURAL.
1. GENERAL SPECIFICATIONS: BIVAR MOLDED COMPONENT SPECIFICATION BV00-E101.


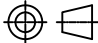
STANDARD TOLERANCE (UNLESS OTHERWISE SPECIFIED)		 4 THOMAS, IRVINE, CA. 92618 TEL: (949) 951-8808 FAX: (949) 951-3974	
DECIMALS	ANGULAR		
.X ± .1	X° ± 1°	 <b>TITLE:</b> PRINTED CIRCUIT BOARD EJECTOR	
.XX ± .01			
.XXX ± .005		<b>PART NO:</b> CP-8X	REVISION: F
DESIGNED: S. Irving	DATE: 05/13/98	<b>CAGE CODE :</b> 32559	<b>SHEET #</b> 1 <b>OF</b> 2
CHECKED: D. Green	DATE: 12/04/02	CAD GENERATED DOCUMENT. DO NOT MEASURE DRAWING.	

OTHER AVAILABLE COLORS  
\* SEE TABLE FOR ORDERING INFORMATION

REV.	DESCRIPTION	DATE	APPROVED
	SEE SHEET #1		



6. PARTS ARE DYED TO COLOR UPON REQUEST.

STANDARD TOLERANCE ( UNLESS OTHERWISE SPECIFIED ) DECIMALS                      ANGULAR		 4 THOMAS, IRVINE, CA. 92618 TEL.: (949) 951-8808    FAX: (949) 951-3974	
			
DESIGNED: <b>S. Irving</b>	DATE: <b>05/13/98</b>	TITLE: PRINTED CIRCUIT BOARD EJECTOR	
CHECKED: <b>D. Green</b>	DATE: <b>12/04/02</b>	PART NO: <b>CP-8X</b>	REVISION: <b>F</b>
		CAGE CODE : 32559	SHEET # 2 OF 2
CAD GENERATED DOCUMENT. DO NOT MEASURE DRAWING.			